



DIGITAL INFO MEDIA PVT. LTD.

(Audio Visual Integrators)



- Command and Control Centre Solutions
- Substation Automation System
- Tunnel Management System
- Sound & Light Show Solutions
- Auditorium Solutions
- Museums / Planetarium Solutions

WE ARE THERE FOR YOU

To Help Your Business Grow Exponentially

Since 2009 ...



GIVE US A CALL!
+91 98101 67259

 info@digitalinfomedia.in

 www.digitalinfomedia.in

SMART CLASS SOLUTIONS

An Interactive Flat-Panel Display (IFPD) is a large-format touch screen display ideal for meeting rooms, class rooms and collaborative spaces enhancing understanding. It is a replacement for clunky or outdated projector technology with a higher-quality display, enhanced connectivity, Built-in Audio and built-in software solutions with interactive content.

Available in sizes of 55"/65"/75"/85"/98"/105"



BEST OF
THE CLASS
SERVICES

AUDITORIUM SOLUTIONS

Auditorium spaces are designed to accommodate large audiences. As such, they tend to have wide spans and are multiple-stories high in order to accommodate seating, sightlines, and acoustical requirements. Raised stage/dais floors and special sound & lighting equipment are often required as well.

- Sound Reinforcement
- Video
- Acoustics
- Stage Furnishing
- Stage Lighting
- Video Conferencing/Live streaming/Recording
- Carpet
- Chairs



FAÇADE LIGHTING

Facade lighting is the use of light fixtures to illuminate the exterior of a building at night. The primary goal is to bring out the architectural beauty of a structure after the sun sets. But other than that, it can also increase security or appeal to the local community.

Facade lighting is layers of individually controllable lights attached or woven into the building façade that turns into a gigantic screen displaying text, graphics and animations.

Impressive facade lighting makes buildings visible in the urban space and enables orientation. There are different methods of illuminating a building depending on the type, for example office building, historical building, residential building or museum.

You have various lighting options for this specific purpose, including outdoor wall washers, architecture flood lights, outdoor wall lights, and linear facade lighting.



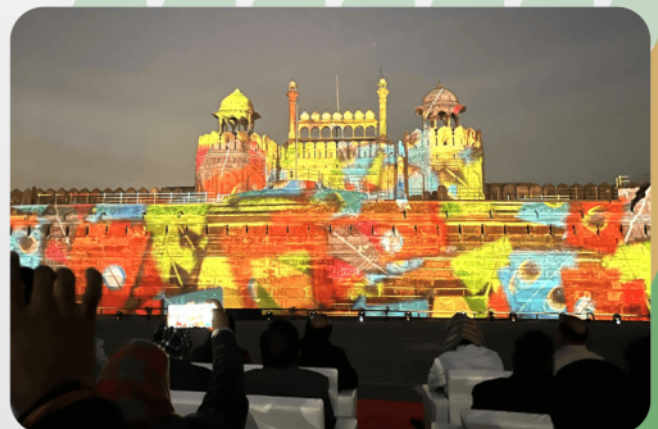
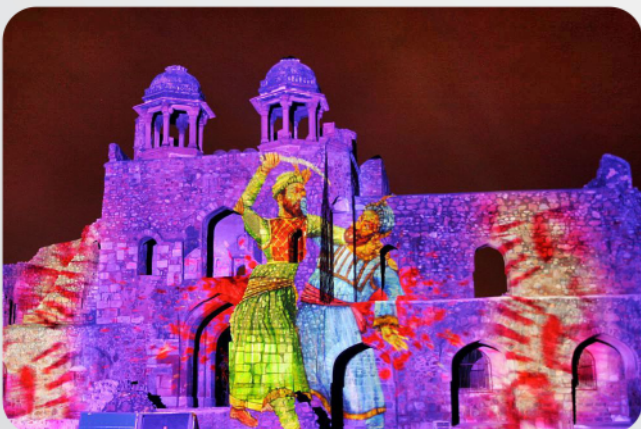
LIGHT & SOUND SHOW

A night time spectacle or performance, at which a building, historic site, etc., is illuminated and the historic significance is imparted to spectators by means of narration, sound effects, and music.

Special lighting effects are projected onto the façade of a building or ruin and synchronized with recorded or live narration and music to dramatize the history of the place.

A laser lighting display or laser light show involves the use of laser light to entertain an audience. A laser light show may consist only of projected laser beams set to music, or may accompany another form of entertainment, typically musical performances.

3D PROJECTION WITH SOUND & LIGHT SHOWS are the latest thing.



DIGITAL PODIUM

Digital Podium is a futuristic device that amps up your learning experience by several notches. The easy-to-use device is equipped with contemporary features like an adjustable LED touch screen, wireless microphone, wireless mouse and keyboard, audio system, lock mechanism, etc

Digital Podium is designed to help presenters to deliver interactive presentations and lectures in a more engaging and efficient way. It offers a more dynamic, engaging and enhanced presentation experience compared to traditional podiums.



BEST OF
THE CLASS
PRODUCTS

DIGITAL STANDEE

Digital Signage Standee is very effective for displaying your content in Video. Live stream your content from Website or from any other source.

Digital Standee / Touch Screen Kiosk - Floor Stand Digital Signage and Displays Android Wi-Fi IPS for Restaurants, Exhibition, Shopping Malls, Wedding Ceremony & Real estate Projects. Available in 55" & 65" sizes.



VIDEO WALL / PROFESSIONAL DISPLAYS

Video walls are often used in public places such as airports, convention centers, and stadiums to screen information or advertisements. Many businesses also use video walls to showcase products or services, or to screen company information such as news updates or financial data.

Since video walls consists of a tiled array of displays with thin Bezel, the total resolution of the display surface increases with each display added to the array. This means a video wall has a much larger display area and far higher resolutions than a single display or projector.

Professional Displays are ideal for signage solutions, these high-end displays impart superior resolution and high brightness to make an impact even in a heavily crowded environment. Owing to its premium design and cutting-edge display technology, it draws user attention and elevate the impact of information. Ideal for 24x7 applications.

Available in various sizes, 43"/55"/65"/75"



SECURITY AND SURVEILLANCE



Unified System of Monitoring



CCTV



Cloud based Monitoring

We design & commission surveillance project which include Video management systems, CCTV, ALPR, Access control, supply of IT hardware & Optical fiber cable lying & terminations. We also provide one unified interface for monitoring data & Video.

INDOOR & OUTDOOR LED/DIGITAL DISPLAY



- Pixel Pitch : 1.2mm, 4mm, 6mm, 8mm, 10mm
- For 24x7 applications ; Professional Grade Displays
- Intelligent on-site Uniformity Calibration ; Front IP65/Rear IP65



SOUND REINFORCEMENT / PA SYSTEM

Sound reinforcement system is the combination of microphones, signal processors, amplifiers, and loudspeakers in enclosures all controlled by a mixing console that makes live or pre-recorded sounds louder and may also distribute those sounds to a larger or more distant audience.

Professional audio systems, are specialised setups designed to deliver high-quality sound reproduction and recording capabilities for various applications.

- Powered Speakers.
- Stage Monitors.
- Subwoofers.
- Mixer
- Professional Microphones
- Passive Loudspeakers.
- Line Array Speakers.
- Ceiling Speakers
- DSP
- Horn/Garden Speakers



COMMAND AND CONTROL CENTER SOLUTIONS



- DLP / LCD Video wall
- Ultra High brightness; Resolution 4K
- Available sizes : 46" , 50" , 55" , 70" , 80"
- 24x7 applications
- Fully Customizable with High tech features
- Superlative Ergonomics with Future proof Designs.
- Control Room Console Solutions – Scalable and Modular; No carpentry work; Faster Installation
- Control room infrastructure for providing proper acoustics, lighting effect & consoles suitable for 24x7 environment
- Command & control unified platform with focus on cyber security , operation & privacy as core



MUSEUMS

Future of museums and the digital generation of today will blend into it without batting an eyelid. The museums of the future are going to be powered by Artificial intelligence (AI) with personalized content and experiences delivered based on your preferences or even your movements in the museum spaces. Augmented with 360 degree, interactive 3D models of the museum artifacts, pre-defined tours to take you through a guided experience with enhanced imagery & descriptions, and easy to navigate controls; these Digital Museums are a step towards the future of digitizing rich heritage/culture.

Interactive exhibits are becoming increasingly popular in modern museums. These exhibits often use touch screens, gesture recognition, audio/video clips and other interactive technologies to encourage visitors to actively participate in the learning process.



PLANETARIUMS

Planetarium, theatre devoted to popular education and entertainment in astronomy and related fields, especially space science, and traditionally constructed with a hemispheric domed ceiling that is used as a screen onto which images of stars, planets, and other celestial objects are projected. A planetarium is a place where you can go to see what the night sky looks like. Planetariums have a large room with a dome-shaped ceiling and many seats. A special projector in this room can shine images on the domed ceiling and show you the stars and other objects in the night sky.

A dominant feature of most planetariums is the large dome-shaped projection screen onto which scenes of stars, planets, and other celestial objects can be made to appear and move realistically to simulate their motion. The projection can be created in various ways, such as a star ball, slide projector, video, full-dome projector systems, and lasers. Typical systems can be set to simulate the sky at any point in time, past or present, and often to depict the night sky as it would appear from any point of latitude on Earth.



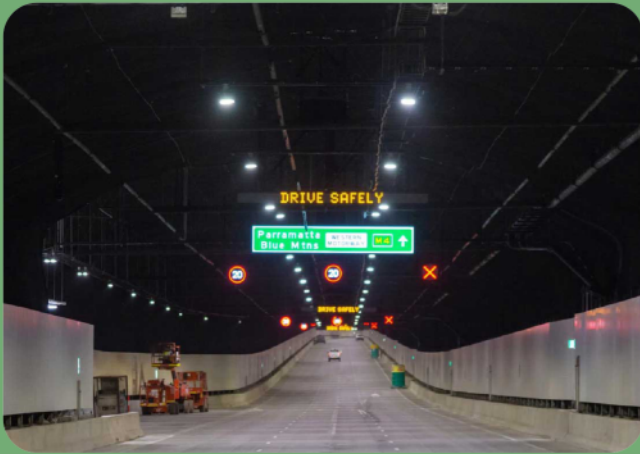
TUNNEL MANAGEMENT SYSTEM

Tunnel Management is a modular and integrated suite consisting of subsystems that work together for data detection within the tunnel (such as ventilation and pressurization), monitoring the overall infrastructure status, and implementing safety measures in case of fires and accidents.

A complete traffic management system for tunnels comprises of LED variable message signs, traffic counting equipment, weather stations, CCTV surveillance and accurate incident detection.

URBAN TRAFFIC MANAGEMENT SOLUTIONS

- Intelligent Traffic Management System with Video Detection
- Variable Message Signs - Roadside & Mobile
- CCTV Surveillance
- Parking Management System
- Bus Priority & Management System
- Street Lighting Management System



PLC/RTU AND SCADA

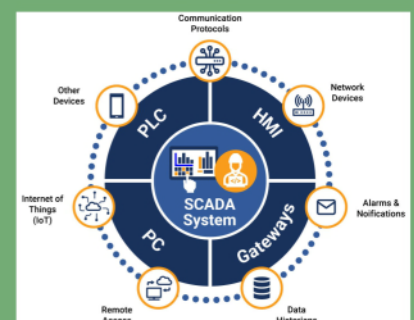
Programmable Logic Controllers Scalable for Small to Large Application.

SCADA is a control system architecture comprising computers, networked data communications and graphical user interfaces for high-level supervision of machines and processes. It also covers sensors and other devices, such as Programmable Logic Controllers, which interface with process plant or machinery. The system consists of both software and hardware components and enables remote and on-site gathering of data from the industrial equipment.

Modern SCADA systems allow real-time data from the plant floor to be accessed from anywhere in the world. This access to real-time information allows governments, businesses, and individuals to make data-driven decisions about how to improve their processes. Without SCADA software, it would be extremely difficult if not impossible to gather sufficient data for consistently well-informed decisions.

SCADA Applications in Industries

- Electric power generation, transmission and distribution.
- Water, wastewater and sewage.
- Buildings, facilities and environments.
- Manufacturing.
- Mass transit.
- Traffic signals.
- Oil and Gas.

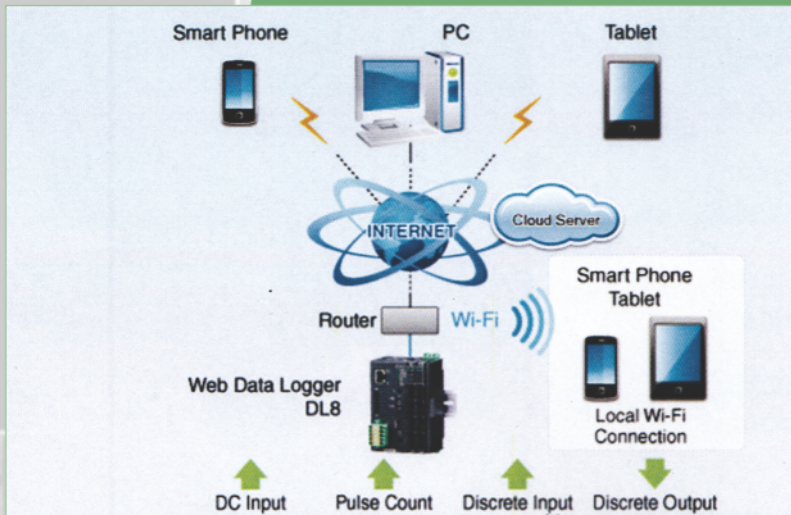


SUBSTATION AUTOMATION SYSTEM

The Sub station automation systems help utilities in managing their large state-wide and region-wide Power grid Transmission Networks from Load Dispatch Control Centres. We offer solution with fully operational Backup Control Centres, for highest availability, LVS For increased visibility & cloud based monitoring for continuous availability.

SYSTEM ARCHITECTURE

The system uses web loggers connected to remote IO's for capturing Discrete & analog I/O's.



The system offers multi benefits viz a viz data handling :-

- Local Memory for data storage
- Built in Webserver
- Data display on Modules TCP/IP on local server /LVS
- Increased data Visibility for LVS
- Cloud based monitoring ensuring high availability of the system

SYSTEM COMPONENTS



Data Collection

Data collection improvement by adding RTU's & Smart Power Transducer, Use of Open protocols for Data collection.



Analysis

Data Analysis by storing data on common platform. Better Data Archiving Easier data access.



Visualization

Providing Large video screen for increased visibility. Easier across the platform access by provision of data over cloud.



Decision

Easier decision making by use of analytics. Maintenance scheduling & faster response for problem resolution.

BENEFITS

- Increased Information Availability
- Higher Visibility
- Short Fault Restoration Times
- Availability of Real Time data for Network Analysis & Reconfiguration
- Historical information for analysis
- Load Forecasting and capacity planning
- Asset tracing and management
- Customizable cloud presentation
- Audit trail
- Customizable Report generation

OUR MAJOR CLIENTS





Forging long term customer relationships and setting industry benchmarks in after sales support.

We are committed to providing timely and quality customer care at all steps and levels of operations. Service and excellence are the two core values which we believe in strongly.



DIGITAL INFO MEDIA PVT. LTD.
(Audio Visual Integrators)

Regd. Off. : C-47 (Old C4/28), Acharya Niketan, Mayur Vihar - 1, Delhi - 110091

Tel. / M. : 011 43024910, 9810167259 / 9810343310 / 9810354456

Email : info@digitalinfomedia.in ; www.digitalinfomedia.in

Regional Off. : Lucknow

GST No. 07AADCD1775B1Z0